



IMAGINE COMPLETELY AUTOMATING YOUR NEXT BLASTING PROJECT - IT MAY BE EASIER THAN YOU THINK!

Imagine your next blasting project being carried out by a skilled operator that never stops for a break, can squeeze into those hard to reach areas, never uses sick leave and is not affected by harmful coatings such as lead-based paint. You have just imagined the Sabre Abrasive Blasting System.

The system has the ability to scan the blasting environment and determine the parameters required to carefully complete the task. With the input of basic required data, it is then just the push of a button - the robot takes care of the rest. The system has been designed with ease of installation in mind - no previous robotics experience is necessary.

COMPONENTS



BLASTING ROBOT



CONTROL PANEL



SAFETY CONTROLLER UNIT



HAND-HELD CONTROLLER

FEATURES



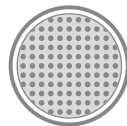
ELIMINATES REPETITIVE STRAIN INJURIES



PORTABLE LIGHT WEIGHT COMPONENTS



SIMPLE OPERATION NO DEGREE NEEDED!



PRODUCES CONSISTENT SURFACE PROFILE



MINIMIZES JOB TIME IMPROVES PRODUCTIVITY



MINIMAL EXPOSURE TO CONTAMINANTS

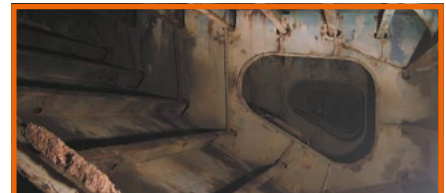
APPLICATIONS



BRIDGES



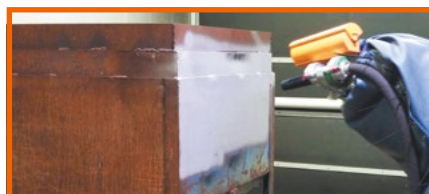
TANKS



MARINE STRUCTURES



CONFINED SPACES



BLAST ROOMS



HAZARDOUS AREAS



| | | |
|------------------------------|---------------------------------------|--|
| BLASTING PRODUCTIVITY | Max Blast Shot Speed | 400mm/s (15.7 in/s) |
| | Max Coverage Rate | 40m ² /hr (430 ft ² /hr) |
| | Nominal Coverage Width | 3m (9.8 ft) all directions |
| | Minimum Workspace (Box Girder) | 80cm x 80cm (31.5" x 31.5") |
| | Hose Size | NHP-1 & NHP-2 |
| | Nozzle Size | #7 (7/16") Nozzle with 2" UNC / 50mm Contractor Thread |

| | | |
|------------------------------------|-----------------------------------|--|
| SABRE SYSTEM SPECIFICATIONS | 6 DOF Arm | 25 kg (55 lb) |
| | WEIGHT Safety Control Unit | 27.5 kg (61 lb) |
| | Operator Control Unit | 11.4 kg (25 lb) |
| | Power | 24V DC 20A peak - includes mains adaptor |
| | Environmental | IP56 |
| | Rated Payload | 15 kg (33 lb) 150N Thrust |
| | Mounting | Quick release frame - Custom mounts, rails available |

THE SABRE PROCESS



1. SCAN

THE SABRE ROBOT IS PLACED INSIDE THE STRUCTURE TO BE BLASTED AND SCANS ITS' ENVIRONMENT



2. PLAN

THE SCANNED AREA IS PROCESSED AND OBSTACLES ARE TAKEN INTO CONSIDERATION



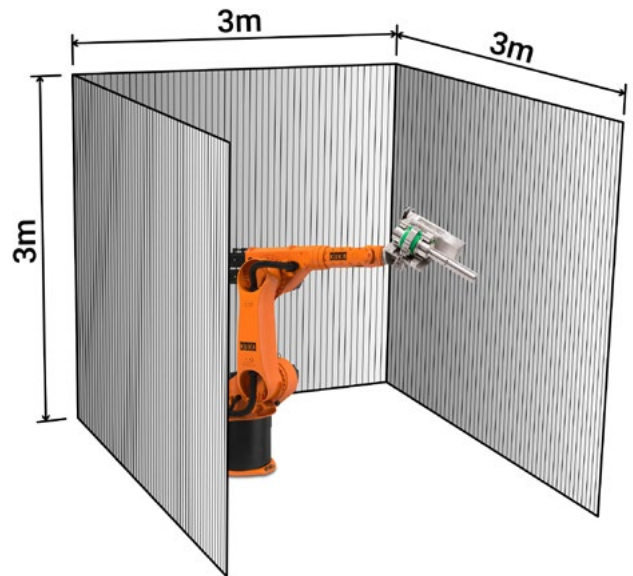
3. LOCALISATION

A PATH IS OPTIMISED FOR MAXIMUM EFFICIENCY WHILE PROVIDING A CONTROLLED BLASTING SPEED, ANGLE AND DISTANCE TO YOUR SPECIFICATION



4. BLAST

THE SCANNED AREA IS PROCESSED AND THE SOFTWARE DECIDES ON THE BEST PLAN OF ATTACK



IMPORTANT NOTE: THE SABRE SYSTEM IS NOT A SUBSTITUTE FOR A BLASTING OPERATOR. It's an extension of the abrasive blasting process that offers opportunities that have never before been possible.

FOR MORE INFORMATION OR FOR A QUOTATION:

SABRE AUTONOMOUS SOLUTIONS - AUSTRALIA

☎ (+61 2) 9792 2733

📍 291 MILPERRA ROAD, REVESBY NSW 2212

✉ INFO@SABREAUTONOMOUS.COM.AU

🌐 SABREAUTONOMOUS.COM.AU

SABRE AUTONOMOUS SOLUTIONS - USA

☎ (833) 722-7387

📍 SUITE 61, 199 NEW ROAD LINWOOD, NJ 08221

✉ ANTHONY@SABREUS.COM

🌐 SABREUS.COM